

PEIKER | CEE

Configuration-App

CEEEOACH PLUS



Instruction

English translation of the original German instruction manual

03/2022

Table of contents

Notes on the instructions and the manufacturer	3
Keep guide available	3
Information available online	3
Design features in the text	3
Copyright	4
Manufacturer address	4
Security.....	5
Intended use	5
Design features of the warning labels	6
Design features of the notices on property damage	6
Task and function	7
Download and install the APP	8
.....	8
Installation.....	9
Registration	10
Login.....	11
Add device	12
Add a device for the first time	13
Add a device for the second time.....	14
Configuration of your device with the APP	15
Language setting of your device	15
Indication that the microphone is switched off (Mute).....	16
Time preselection for automatic switch-off	17
Announcement repetition at low battery charge	18
Acknowledgement of the volume change on the BT-HS.....	19

Software update20

Information about your device22

Profile settings23

Notes on the instructions and the manufacturer

This manual supports you in using the CEECOACH^{PLUS} APP, version 1.0.3 or higher.

In the following, CEECOACH^{PLUS} APP is simply called **APP** and the corresponding CEECOACH^{PLUS} communication device is simply called **device**.

Keep guide available

These instructions are part of the app.


- ▶ Make sure that this guide is always available for you.
- ▶ Always download the latest manual after an update.

Information available online

You will receive information about news regarding the function expansion and updates for the APP and the device in the newsletter and in the social media as well as at www.peiker-cee.com.

Design features in the text

Normal text

- Enumeration
- ▶ Action steps
-  Tips, contain additional information.

Copyright

These instructions contain information that is subject to copyright. These instructions may not be copied, printed, filmed, processed, reproduced or distributed in any form, either in whole or in part, without the prior written permission of peiker CEE GmbH.

©2022 peiker CEE GmbH

All rights reserved.

Manufacturer address

peiker CEE GmbH

Garden street 25

D-61352 Bad Homburg

Tel.: +49-6172-1797-500


E-mail: info@peiker-cee.com

Internet: www.peiker-cee.com

Security

Intended use

- This APP is to be used exclusively for the configuration of the device.
- Intended use also includes reading and understanding this manual. Furthermore, you must observe and comply with all information in this manual.
- Any other use is expressly deemed to be improper.

 At least release 1.2.2.8 must be installed on your device to use the APP.

If necessary, refer to the chapter "Updating the device software" in the user manual of your device.

Design features of the warning labels

 WARNING	
	Notes with the word WARNING warn of a dangerous situation that can possibly lead to death or serious injury.

 CAUTION	
	Notes with the word CAUTION warn of a situation that may result in minor or moderate injury.

Design features of the notices on property damage

<i>ATTENTION!</i>	
	These notes warn of a situation that will result in property damage and limited functionality.

Task and function

The APP is to be used exclusively for configuring one or more devices:

- Language setting of your device (English, German, French)
- Indication that the microphone is switched off (Mute)
- Time preset after your device turns off when no other connected device is within radio range.
- Announcement repetition at low battery charge
- Acknowledgement of the volume change on the BT-HS
- Information about your device
- Settings for your App
- Software update

Download and install the APP

The app is available for download free of charge:

- In Google Play for all smartphones with Android operating system.
- In the App Store for Apple devices with IOS operating system.



For the functionality of this APP, the following operating system version or higher must be installed on your smartphone/tablet:

- Apple iOS:
iOS 11.0 or later and compatible with iPhone 5s or later, iPod touch and iPad Air or later
- Android:
Android 5.1 (Lollipop) or later

Installation

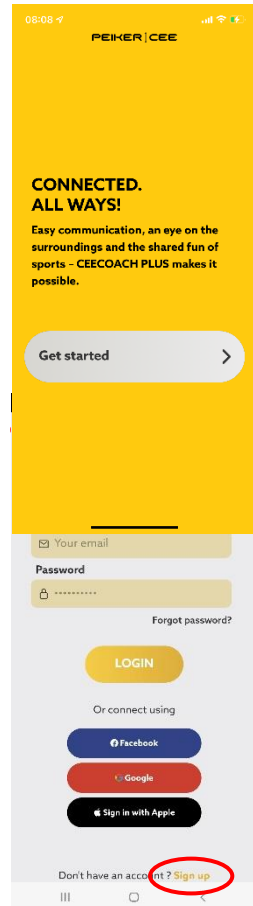
After downloading and opening the app for the first time, you will see the screen opposite:

You will also see this screen if you have previously logged out of the APP.

- ▶ Select the "Get started" menu
- ▶ Log in with your login data that you provided during registration

or if you have never been registered before

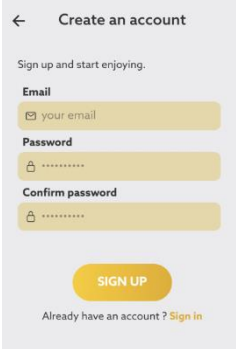
- ▶ Register by clicking on the menu item



i When you log in for the first time, you will be asked to share your location data. If you want to configure your device, you must agree to this.

Registration

- ▶ Enter a valid email address and a password of your choice in the "Create an account" menu.
- ▶ Press "SIGN UP"

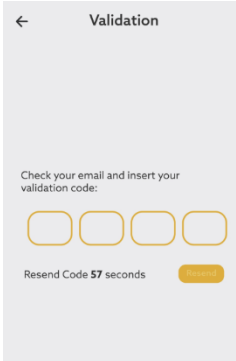


The screenshot shows a mobile app interface for creating an account. At the top left is a back arrow and the title "Create an account". Below the title is the instruction "Sign up and start enjoying.". There are three input fields: "Email" with a placeholder "your email", "Password" with a placeholder ".....", and "Confirm password" with a placeholder ".....". Each field has a lock icon on the left. At the bottom is a yellow "SIGN UP" button. Below the button is the text "Already have an account? [Sign in](#)".

For your security, 2-factor authentication is implemented.

- ▶ In the "Verification" menu, enter the 4-digit validation code that we have sent to the e-mail address you have chosen.

After that you are automatically logged in. It continues now in the chapter "[Add device](#)"



The screenshot shows a mobile app interface for validation. At the top left is a back arrow and the title "Validation". Below the title is the instruction "Check your email and insert your validation code:". There are four empty input boxes for the code. Below the boxes is the text "Resend Code 57 seconds" and a yellow "Resend" button.

- ① You can bypass the registration process if you have a Facebook, Google or Apple account and register through it,

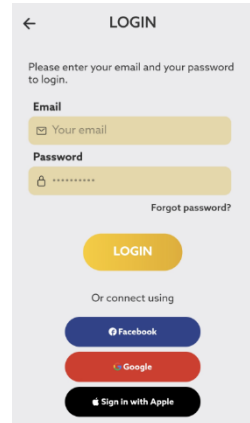
Login

If you are registered and logged in, the login is retained and you will be taken directly to the "[Add device](#)" menu every time you start the APP in the future.

If you have logged out before, you have to log in again.

- ▶ Enter your name and password
- ▶ And confirm with "LOGIN".

After that you are automatically logged in. It continues now in the chapter "[Add device](#)"



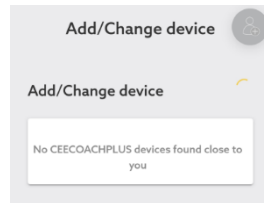
- ❗ If you do not exit the menu after clicking "Login", please check if you have entered your e-mail address and password correctly and correct them if necessary.

If necessary, you can request a new password by clicking "Forgot password".

Add device

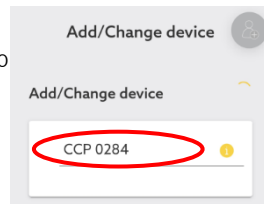
After each successful login you will automatically get to the menu "Add device ...".

If there is no switched-on device in your vicinity, the display will show "No CEECOACHPLUS devices found close to you".



If there are one or more switched-on devices in your vicinity, they will be displayed.

- ▶ Select the device to be configured.



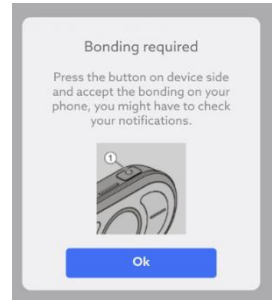
- i** CCP 0284 means: [Grab your reader's attention with a great quote from the document or use this space to emphasize a key point. To place this text box anywhere on the page, just drag it.]

CEECOACH PLUS + last 4 digits of the serial number (in the example 0284), which you can find on the label on the back of the device.

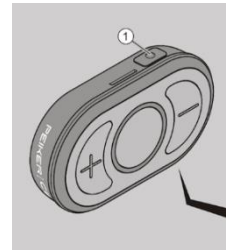
- i** To avoid confusion, peiker CEE recommends that you only switch on the device that is to be configured.

Add a device for the first time

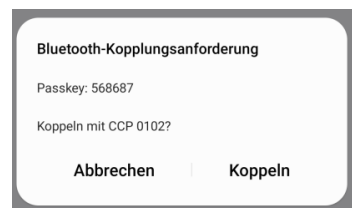
For security reasons, to prevent "hijacking" of devices, you will be asked to confirm the connection.



- ▶ Confirm the connection request on your device with a short press (less than 1 second) on the function key (1).



- ▶ Confirm the pairing request on your smartphone as well



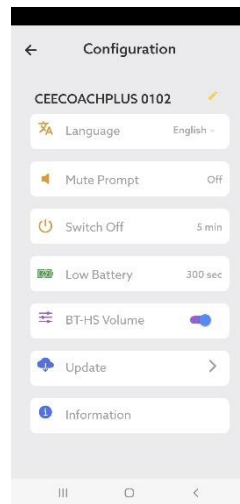
Screenshoot Created with a German Smartphone

Continue with the chapter "[Configuring your device with the APP](#)".

Add a device for the second time

After selecting the device, the "Configuration" menu for your selected device appears automatically after a few seconds.

You can recognize the connection to your device by the flashing of 6 of the 12 LEDs in the light ring.

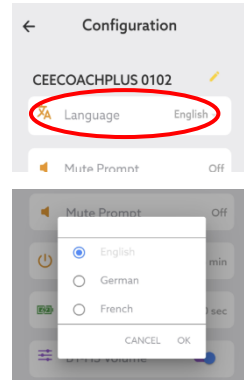


Continue with the chapter "[Configuring your device with the APP](#)".

Configuration of your device with the APP

Language setting of your device

- ▶ Select the "Language" menu item
- ▶ Select the language German, English or French, depending on your preference
- ▶ Confirm the selected language with "OK" or exit the menu without changes with "CANCEL".



The announcements/voice prompts of your device will now be announced in the language you have selected.

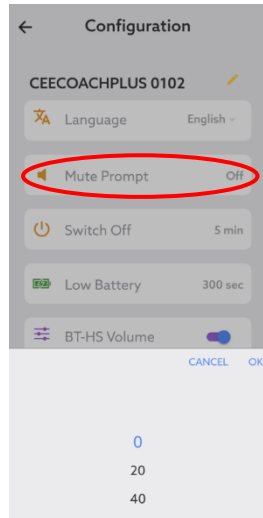
- ❗ In the delivery state or after resetting your device to the default state, the voice prompts are announced in English language.

Indication that the microphone is switched off (Mute)

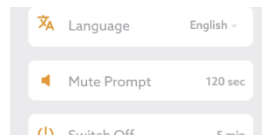
In the delivery state or after a reset of your device, there is no announcement / voice prompt after switching off the microphone (mute) on the device.

With this menu item you can select the repetition rate of the announcement between 20 and 300 seconds in 20 second steps.

- ▶ Select the menu item "Turn off microphone"
- ▶ Select a value between 20 and 300 seconds, depending on your preference
- ▶ Confirm the selected value with "OK" or exit the menu without changing it with "CANCEL".



In the example opposite, the repetition rate has been set to 120 seconds.



- ⓘ If you have selected "0", there will be no announcement / voice prompt.

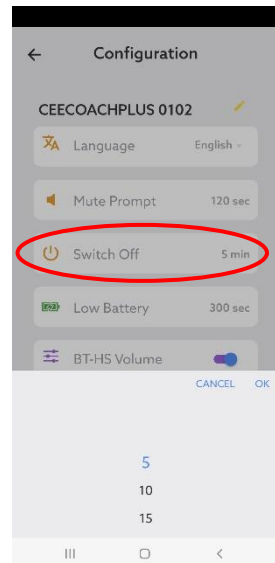
Time preselection for automatic switch-off

In the delivery state or after a reset of your device, it will be Automatically switched off after 5 minutes, if no other connected device is within radio range.

This is done to conserve battery power and keep your device operational for as long as possible.

With this menu item you can select the shutdown of your device between 5 and 120 minutes in 5 minute steps.

- ▶ Select the "Switch off" menu item
- ▶ Select a value between 5 and 120 minutes depending on your preference
- ▶ Confirm the selected value with "OK" or exit the menu without changing it with "CANCEL".



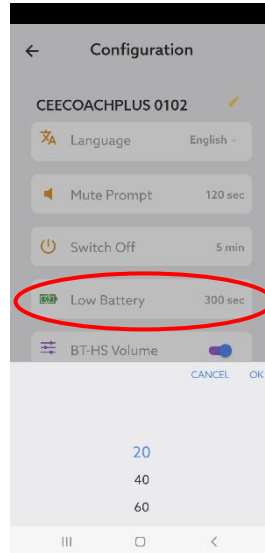
- ❗ In the delivery state or after a reset of your device, the value for the automatic switch-off is 5 minutes.

Announcement repetition at low battery charge

Your device automatically warns you with an announcement/voice prompt when the battery charge of your device is low (charge less than 30%). The announcement is repeated every 300 sec. (5 minutes).

With this menu item you can select the repetition rate of this announcement/voice prompt between 20 and 300 seconds in 20 second steps.

- ▶ Select the "Low battery" menu item
- ▶ Select a value between 20 and 300 seconds, depending on your preference
- ▶ Confirm the selected value with "OK" or exit the menu without changing it with "CANCEL".



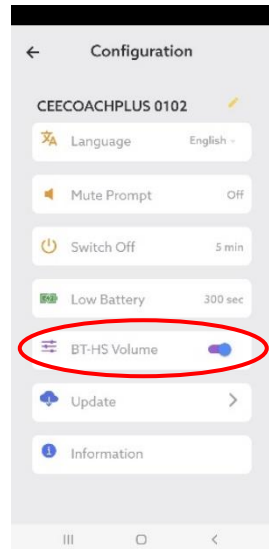
- ❗ In the delivery state or after resetting your device to the default state, the value is 300 seconds.

Acknowledgement of the volume change on the BT-HS

If you adjust the volume on your device louder or softer, each change is acknowledged with a "peep" in your headset.

Since some Bluetooth headsets automatically acknowledge the volume change, you can disable the device-side acknowledgement with this menu item.

- ▶ Select the "BT-HS Volume" menu item
- ▶ Use the slide switch to switch off the device-side acknowledgement.



- ❗ In the delivery state or after resetting your device to the default state, the acknowledgement is switched on.

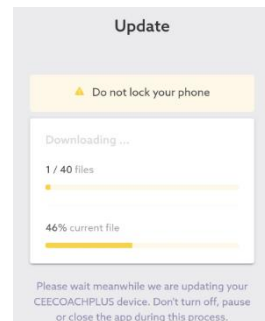
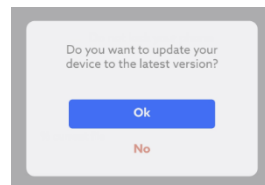
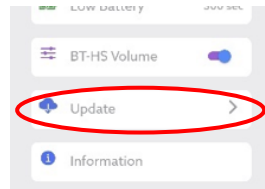
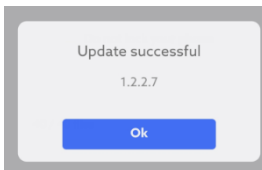
Software update

With the help of your app, you can keep your device up to date with the latest software. By default, your device is automatically updated and the software with the latest features is always loaded.

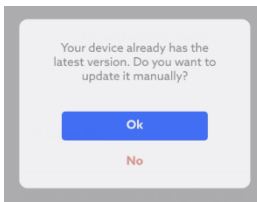
If you decide to update the [profile](#) manually (see chapter "[Profile settings](#)"), proceed as follows:

- ▶ Select the "Update" menu item
- ▶ Answer "OK" to download the latest software. You can now track the progress of the software update in your app

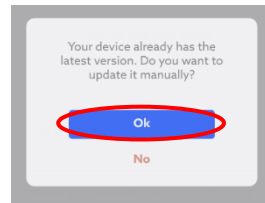
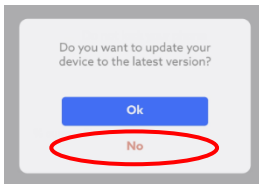
The successful loading is acknowledged



If you already have the latest software on your device, you will receive the following message



- ① Acknowledging the software update with "No" and acknowledging the current software version with "Ok" is only intended for service purposes. You should only do this if instructed to do so by the peiker CEE service team.



ATTENTION!

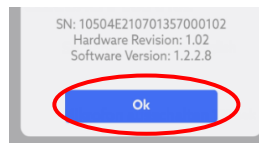
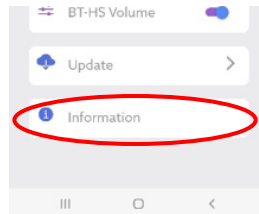
Never turn off your device or quit the app before the update is complete.
Failure to do so may result in loss of function of your device.

Information about your device

The menu Information, gives information about serial number, hardware version and software version.

You will need this menu when our service representative asks you for it.

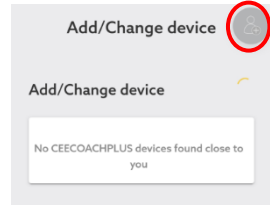
- ▶ Confirm with "OK" to return to the "Configuration" menu.



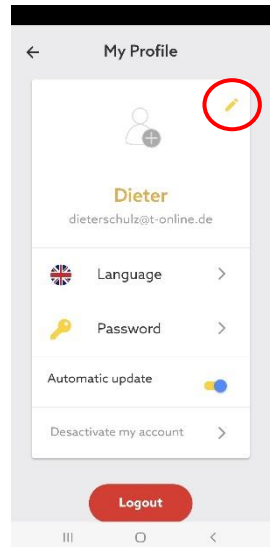
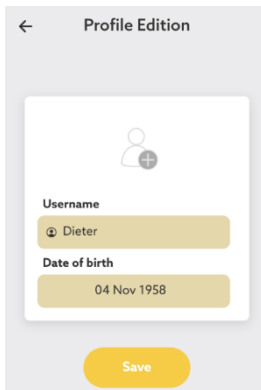
Profile settings

In the menu "Add device ..." you will find the option to set your profile in the upper right corner.

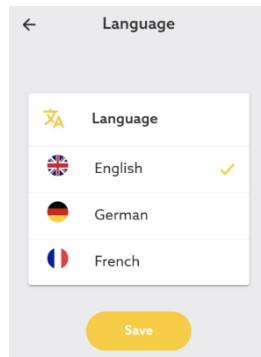
- ▶ Press this menu item to enter the "My Profile" menu.



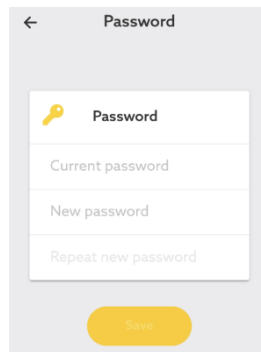
- ▶ Select the pencil icon to customize your username, a birth date or your profile picture.



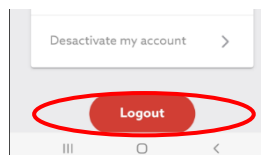
- ▶ Go to the "Language" menu to customize the language of your app.



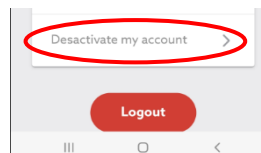
- ▶ Select the "Password" menu to customize your password



- ▶ Press Logout to exit the app



- ▶ Press "Deactivate my account" to exit the app, thereby leaving your record completely deleted



End of these instructions